

K-100 Seeder Parts

KINGAG

KING AGRICULTURAL

STANDARD DISCS & Sizing information

K-100 THE SUPERCEDER

Part no: A-6		hole diam:	13.5mm	large corn & other large seeds
		holes per disc:	6	
		seed spacing:	11-26cm	
Part no: AA-6		hole diam:	12mm	corn, large snow peas & other large seeds
		holes per disc:	6	
		seed spacing:	11-26cm	
Part no: C-6		hole diam:	11mm	sunflower, cotton, snow peas, large peas, edamame,
		holes per disc:	6	
		seed spacing:	11-26cm	
Part no: C-12		hole diam:	11mm	sunflower, cotton, snow peas, large peas, edamame,
		holes per disc:	12	
		seed spacing:	5-13cm	
Part no: BL-12		hole diam:	10mm	peas
		holes per disc:	12	
		seed spacing:	5-13cm	
Part no: G-12		hole diam:	9mm	fairly big seeds
		holes per disc:	12	
		seed spacing:	5-13cm	
Part no: LJ-12		hole diam:	7.5mm	larger beets okra, silverbeet
		holes per disc:	12	
		seed spacing:	5-13cm	
Part no: MJ-12		hole diam:	6mm	beetroot, coated lettuce, silverbeet, cilantro, coated carrots, coated onions. sorghum
		holes per disc:	12	
		seed spacing:	5-13cm	

All Seeder Products inspected at our test farm in Kaitaia


260 Clough Rd, RD2, Kaitaia 0482

NZ copyright act 1974 and DMCA 1998



Part no: MJ-24		hole diam: holes per disc: seed spacing:	6.0mm 24 3-7cm	beetroot, coated lettuce, silverbeet, cilantro, coated carrots, coated onions. sorghum
Part no: F-12		hole diam: holes per disc: seed spacing:	5.0mm 12 5-13cm	spinach
Part no: F-24		hole diam: holes per disc: seed spacing:	5.0mm 24 3-7cm	spinach
Part no: X-4		hole diam: holes per disc: seed spacing:	4.0mm 4 16-38	carrots, onions, leek, mesculin, radish,
Part no: X-12		hole diam: holes per disc: seed spacing:	4.0mm 12 5-13cm	carrots, onions, leek, mesculin, radish,
Part no: X-24		hole diam: holes per disc: seed spacing:	4.0mm 24 3-7cm	carrots, onions, leek, mesculin, radish,
Part no: X-30		hole diam: holes per disc: seed spacing:	4.0mm 30 2-5cm	carrots, onions, leek, mesculin, radish,
Part no: Y-6		hole diam: holes per disc: seed spacing:	3.5mm 6 11-26cm	kale, spring onion, tomato, radish, bok choy, chives, cabbage, mustard,
Part no: Y-12		hole diam: holes per disc: seed spacing:	3.5mm 12 5-13cm	kale, spring onion, tomato, radish, bok choy, chives, mustard,
Part no: Y-24		hole diam: holes per disc: seed spacing:	3.5mm 24 3-7cm	kale, spring onion, tomato, radish, bok choy, chives, mustard,

Part no: YYJ-6		hole diam:	3.0mm	basil, broccoli, cabbage, chinese cabbage, cauli, chicory, brussel sprouts, chives, kohlrabi, kale, turnip
		holes per disc:	6	
		seed spacing:	11-26cm	
Part no: YYJ-12		hole diam:	3.0mm	basil, broccoli, cabbage, chinese cabbage, cauli, chicory, brussel sprouts, chives, kohlrabi, kale, turnip
		holes per disc:	12	
		seed spacing:	5-13cm	
Part no: YYJ-24		hole diam:	3.0mm	basil, broccoli, cabbage, chinese cabbage, cauli, chicory, brussel sprouts, chives, kohlrabi, kale, turnip, rocket,
		holes per disc:	24	
		seed spacing:	3-7cm	
Part no: YX-12		hole diam:	2.6mm	rocket, kale, turnip, mustard
		holes per disc:	12	
		seed spacing:	5-13cm	
Part no: MM-12		hole diam:	6.0mm	round flat seeds like: capsicum, egg plant,
		holes per disc:	12	
		seed spacing:	5-13cm	
Part no: XY-4		hole diam:	NA	Lettuce
		holes per disc:	4	
		seed spacing:	16-38cm	
Part no: XY-12		hole diam:	NA	Lettuce
		holes per disc:	12	
		seed spacing:	11-26cm	
Part no: XY-24		hole diam:	NA	Lettuce
		holes per disc:	24	
		seed spacing:	3-7cm	
Part no: J-4		hole diam:	NA	melons, cucumber,
		holes per disc:	4	
		seed spacing:	16-38cm	
Part no: J-8		hole diam:	NA	melons, cucumber,
		holes per disc:	8	
		seed spacing:	8-19cm	

Part no: N-6		hole diam:	NA	large corn, beans,
		holes per disc:	6	
		seed spacing:	11-26cm	

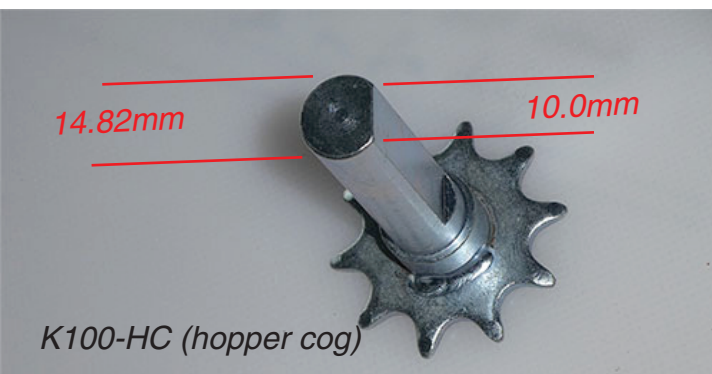
Change to our quality brand of seeder discs today.

pimp your MGS Seeder with our Top Quality Discs!

"We've tested Jang, Jang copies and others. These MGS seeders and parts are the best we've tested, and our manufacturer is committed to working with us to continue design improvements."

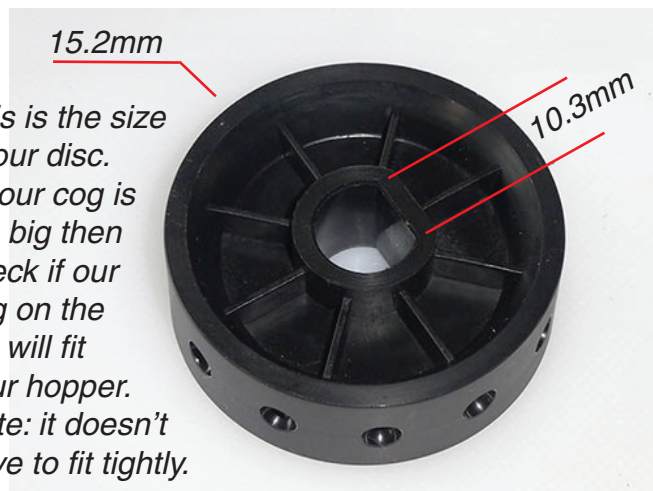
Will our discs fit your Manual Geared Seeder?

If they're a Jang, Jang copy or other similar models, then it's most likely our discs are fully compatible. But since all manufacturers of seeders in Korea, China get some or all parts from other factories and sometimes change their supply - check the measurements. There's a 1% chance you may also need our K100-CG (Hopper Cog) and maybe even our hopper.



K100-HC (hopper cog)

Our hopper hole is 15.0mm



This is the size of our disc. If your cog is too big then check if our cog on the left will fit your hopper. Note: it doesn't have to fit tightly.

KingAg's K-100 Seeder Mechanisms have standard sizes and while we continually work with our manufacturer to improve design & performance, we're committed to staying with these basic sizes to ensure interchangeability of parts. So the seeder you buy today, can be upgraded to follow future upgrades. The main focus in design improvements revolve around seed pickup, transfer and drop and we welcome customer input on individual seed/disc designs.

It takes time and effort to really get behind a product to offer a good service. With seeders, we've started from scratch and tried out many variations and played around with the parts. No suppliers in the world have provided this level of information about manual geared seeders. If you see others stealing our information, please advise us. Sam King.



Other Parts

Part no:
K100-BR



pressure-adjustable seed brush

Part no:
K100-FB

furry throat block - allows smooth seed passing.

Part no:
K100-GT



gear tensioner - bend to suit positions on gear casing until chain is well supported.

Part no:
K100-CH



hopper drive chain

Part no:
K100-HC



hopper cog

Part no:
K100-FS

furrow shaft & cotter pin

Other parts available upon request

“it takes a minute and a screwdriver to change both gears”

“it takes 45 seconds to change a seed roller disc”

There are only 3 things that determine your vege seed spacing:

The next pages show how to consider and select gear ratio options and disc options to suit your vege seed spacings.

Choosing Seed Roller Discs in 6 easy steps

1

first ask yourself some questions...



- how big is the seed? = what size disc hole will the seed fit into?
- how far apart do I want the seeds spaced?
- how many seeds do I want dropped into each hole?
- are the seeds I'm sourcing fairly uniform in size so it's possible for a similar amount of seeds to drop in every hole?
- what's the expected germination rate?

2

notice some things about our disc choices

It's easy when you know how - so learn how...

- the holes in most discs above (in the green boxes) are half a sphere.
- the purple boxes are more specialised for larger seeds or seeds not so spherical.
- MM is round but more shallow to suit flat disc type seeds.
- XY is criss-cross for elongated seeds that might fall one way or another.
- A and AA are very large but you still need to source small corn seeds as if corm seeds are too large, because they're too tough to break, the disc jams and the wheels stop turning until you clear the seed.
- N is for large corn and beans - but still you need to choose a supplier with suitable seed sizes as some seeds are too large.
- discs with holes too small might cause skips, cuts or jams depending on the seed type.
- discs with holes too large could cause jams or cuts but with most seed types it simply allows more seeds to pass.
- with every seed, there are good, bad and better disc choices. Follow the next steps to ensure success with reliability.
- if seeds are too large for the disk and another disc isn't readily available, try adjusting the brush to allow a less restrictive pressure.

Note: for every type of vegetable, the seed size and shape can vary depending on supplier, location, seasons and just about anything else.


However, while some seed types can be changeable, others are remarkably consistent. Commercial suppliers tend to have more consistent stock.

3

there are 4 ways to estimate which disc will suit your seeds

a

- check our list of sizes according to international norms.

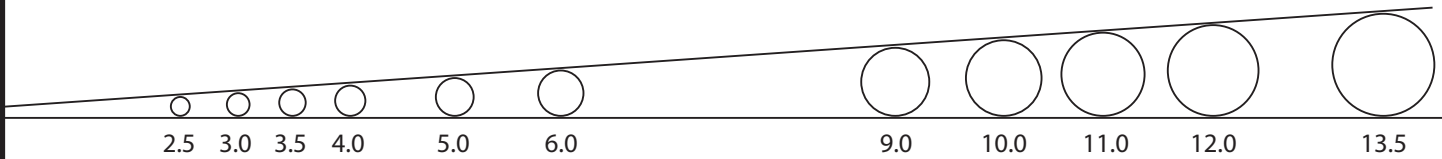
Part no: X-24		hole diam: 4.0mm	carrots, onions, leek, mesculin, radish,
		holes per disc: 24	
		seed spacing: 3-7cm	

these seeds are usually compatible with "X" rollers

b

- Print out our hole guide
See which hole best suits your smallest and largest seed.

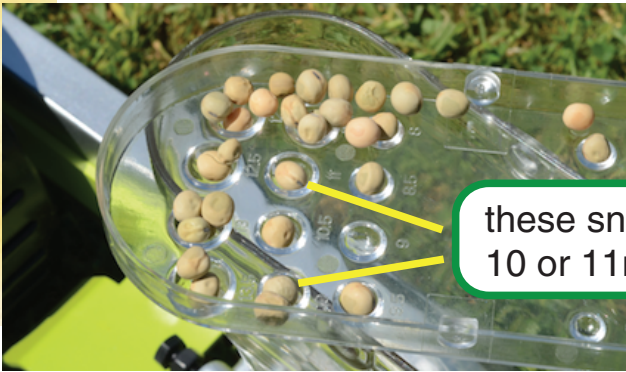
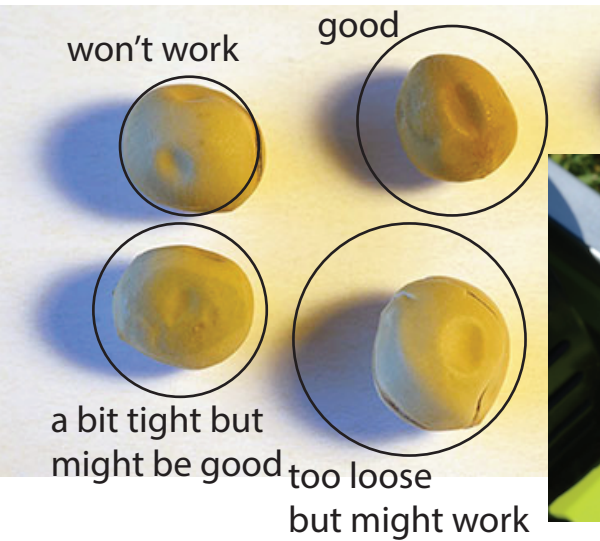
Print this "size guide" and place seeds over the holes



IMPORTANT: Print at 100% size without auto resizing.

c

- put some seeds in the hopper cap and choose the seed with a little space around it.



these snow peas - match 10 or 11mm holes

so use discs BL-12 or C-12

d

- check our results of seeds tested from Terranova and Kings Seeds.

4

Purchase

our prices show we're kind to growers because we're growers too.
it's much cheaper to buy from us than import.

As a rule of thumb, to buy a seeder from USA, Canada, Aus, double the US\$ price to allow for shipping, import taxes, customs clearances and other fees. We welcome T'me sales but prices are higher to allow for Tme fees which keep increasing.

If you're unsure about a disc choice, check our disc return policy.

5

Final Test

Test the disc on the kitchen table

This method is more accurate than a field test as you can get your eyes up close and inspect how the seeds are being selected.

- 1 - remove the hopper from the seeder and place it on your kitchen table next to your coffee.
- 2 - insert the disc according to your estimated size.
- 3 - plonk in some seeds and slowly turn the cog counter-clockwise.
- 4 - You'll see seeds being picked up, go past the brush, around the throat and down onto the table.

You can see how many seeds drop each time a disc hole passes the brush. Obviously if you want more seeds to pass per hole, use a disc with larger holes, for less, smaller holes.

If your seed sizes are consistent and want to fine-tune getting just one seed per hole, if necessary you can adjust the depth of the brush so it sweeps more or less excess seeds.



The Seed Brush

The seed brush sweeps excess seeds away from the seeds that fall into the hole centre.

Some seeds might fall on the edge, sometimes too many seeds want to start falling into the hole - and the brush tries to sweep away the extras.

The seed brush can easily be adjusted to apply more or less sweeping pressure.

It's not difficult to adjust this with trial and error.

6

Discs for seed spacings



The K-100 can place seeds from 2cm - 51cms apart. 2 things determine the spacing.
 1 - number of holes per disc
 2 - gear ratio (which pair of gears are selected).

Note: using the MJ-12 disc (below) as an example, let's learn about seed disc hole sizes and spacings so you can choose the right discs for your seeds.

these seeds are commonly used with this disc but use all methods to check compatibility.

Part no: MJ-12		hole diam: 6mm	beetroot, coated lettuce, silverbeet, cilantro, coated carrots, coated onions. sorghum
		holes per disc: 12	
		seed spacing: 5-13cm	

"MJ" is the roller type which is a 6mm half sphere

there are 12 holes

The seeds can be spaced from 5 to 13cms with this or any other disc with 12 holes. The chart below (also on the K-100 cover) shows 11 gear ratio options with any disc. Each gear ratio selection allows a different seed spacing.

Seed Spacing - Gear Ratio guide sticker on side of K-100 Casing.

播种轮齿数 Teeth qty of sowing gear	14	14	13	13	11	11	10	11	10	10	9	
驱动轮齿数 Teeth qty of driving gear	9	10	10	11	10	11	11	13	13	14	14	
播种轮孔数 hole qty of seeding rolls	3	51	46	43	39	36	33	30	28	25	23	21
4	38	35	32	29	27	25	23	21	19	18	16	
6	26	23	21	19	18	16	15	14	13	12	11	
8	19	17	16	15	14	13	12	11	10	9	8	
10	15	14	13	12	11	10	9	8	8	7	6	
12	13	12	11	10	9	8	7	7	6	6	5	
20	7	7	6	6	5	5	4	4	4	4	3	
30	5	5	4	4	4	3	3	3	3	2	2	

ratio options for discs with 12 holes here...

13cm spacing with 14/9 ratio

8cm spacing with 11/11 ratio

5cm spacing with 9/14 ratio

(only a fule, breaks the 11/11 ratio rule)

Disc Quality Comparison

see the difference!

Our K-100 Seeder Discs with Quality Precision

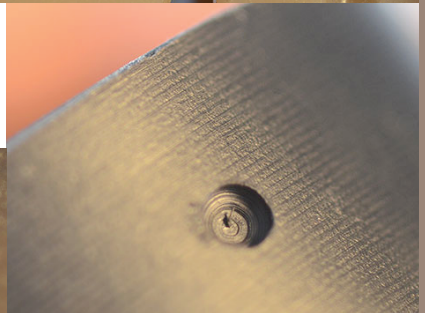
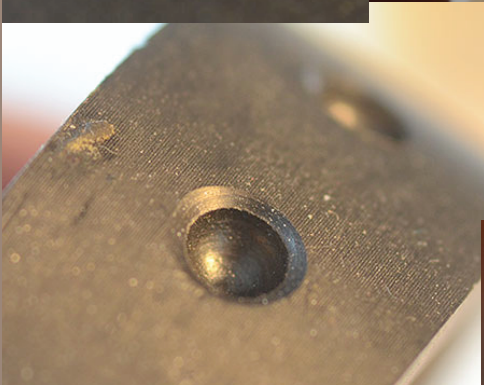
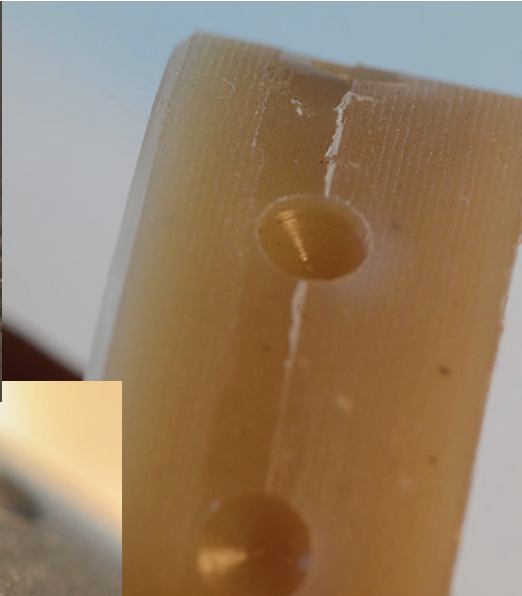
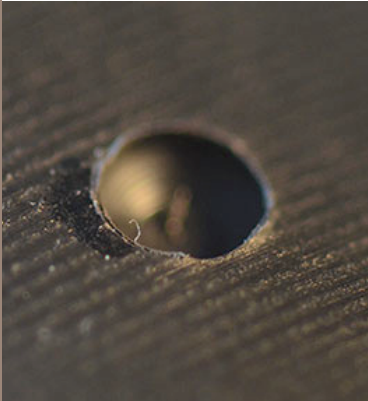


- no sharp edges
- even contouring
- better seed pickup with much less cuts
- anti-static so seeds behave properly
- custom designing to suit your specific growing application

At KingAg, we only source discs from a fussy manufacturer with the highest quality control and complete attention to detail.

SUPPLY FROM OTHER MANUFACTURERS

Below; a selection of discs imported from 4 other MGS suppliers shows poor quality is common. Here you can see dishes, scrapes, gouges, seams from poor manufacturing processes and no quality control whatsoever. Do they drill chamfers manually with a battery drill? Poor discs cause poor seed selecting and a high rate of seed breakage. All producers of MGS's get components from other factories and sometimes change supply. You don't want to get lumped with crap like this.



cheap
n'
nasty

Disc return policy

- notice the discs are sent in top condition without scratches that would affect performance or appearance.
 - if you carefully test the disc on the kitchen table by hand - (without any field tests) and if it's not the right size, you have 2 options.
 - a - add it to your repertoire for use with other seeds in the future.
 - b - return it in "AS NEW" condition for a refund or replacement.
 - for replacements, you will be charged for additional delivery.
 - for refunds, delivery cost is not refunded.
- This offer is a coertesy after hearing customers comments.

Seeder Return Policy

We reserve the right to refuse refund based on the fact, that we go to great efforts to educate our potential customers on just about every aspect of the equipment possible. So we appreciate those who choose carefully before purchasing.

Minor blemishes/scratches

Our manufacturer packages items carefully and so do I.

In the unlikely event, you seeder recieves minor scratches etc during shipment. .. this item is a work tool and will start to collect scratches from the first day of use. So a few minor scratches during shipping only saves you the effort of scratching it yourself.

Faults, parts missing, broken parts

It's unlikely this will happen because this is how we roll...

a - our manufacturer packs carefully and provides us with photos of all items covered separately and then the final boxes packed. this covers them in case if there's a claim.

b - I don't leave items in boxes and just resend. I unpack every single seeder and check all parts are there.

I partly do this because sometimes they put parts for other items inside the hoppers instead of sending an extra box.

c - I know these machines well so I can quickly tell if somethings missing or out of place, before sending out.

However - if anything is broken or missing, please take a photo and notify me within 24 hours of accepting delivery so we can sort it out.

Faults:

These machines are relaible. They're quite strong and will handle any use but not abuse.

There's not much that can go wrong with them. If you break something - the parts are cheap.

If parts wear, it means you're planting a lot and your seeder has earned the right for you to treat it to a new part. Parts are inexpensive from us anyway.



contacts



Sam King
260 Clough Rd, RD2, Kaitaia 0482

Visits and pickups welcome but STRICTLY by prior appointment.
If you visit without an appointment, sorry we're too busy.



search "KingAg Agricultural"



Find us on
facebook.

search "KingAg"



search "KingAg"



www.kingag.co.nz



sam@kingag.co.nz



09 408 0420 - ask for Sam



Sorry, we don't
play text hockey!